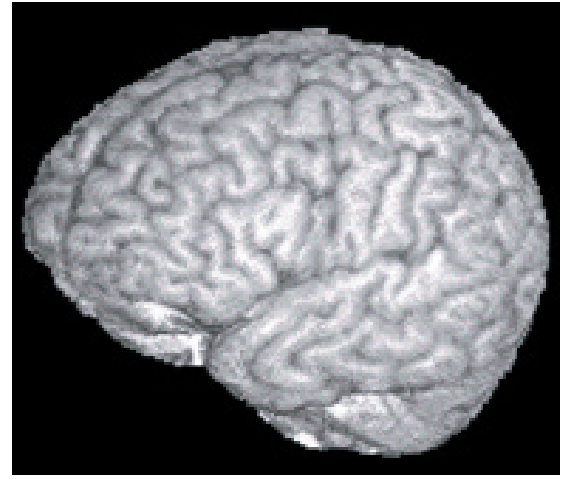




Functional Magnetic Resonance Imaging (fMRI) Safety Information



The following items may contain metal and should not be worn on the day of the fMRI appointment:

- Eyeshadow/Mascara
- Underwire Bras
- Piercings of any kind
- Colored Contact Lenses
- Medication Patches
- Braces
- Shirts or sweaters with metal zippers/snaps/buttons

The following items can not be brought or worn into the MRI scan room, but can be left in the parent waiting room or outside of the scan room with a member of the Yale Reading Center staff:

- Jewelry
- Credit/ID Cards
- Glasses*
- Hairpins/Barrettes/Hair elastics with metal
- Watches
- Steel-toe shoes
- Keys
- Belts
- Coins
- Pens/Pencils
- Safety Pins

*If your child wears glasses for distance, please bring his or her prescription information to the MRI appointment. A staff member will provide your child with nonmetallic MRI-safe glasses to wear during the scan.

*Please speak to the Yale Reading Center staff before scheduling an MRI if your child has any medical conditions, wears hearing aids, orthodontic braces or permanent retainers, or has body implants such as metal rods, joints, screws or pins, eye implants, heart pacemakers, IUD devices, or aneurysm clips.

*If your child has any tattoos, please inform the Yale Reading Center staff on the day of your child's appointment. Some tattoos may contain metallic paints and need to be monitored by a technician during imaging.

*If you have any questions or concerns, please contact the Yale Reading Center at (203) 764-6752. Thank you.